

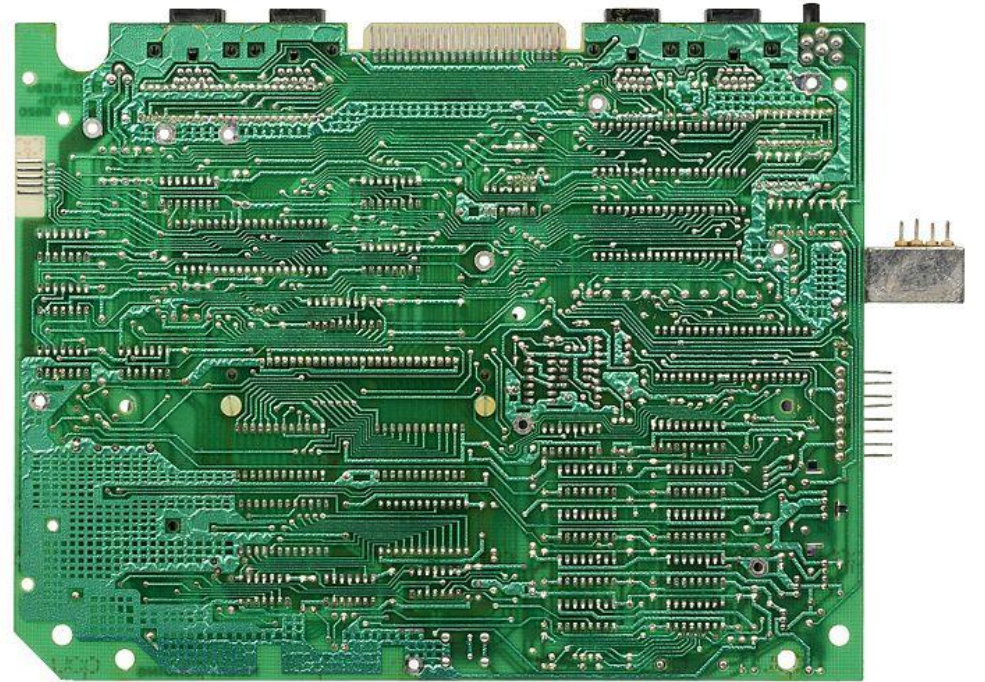
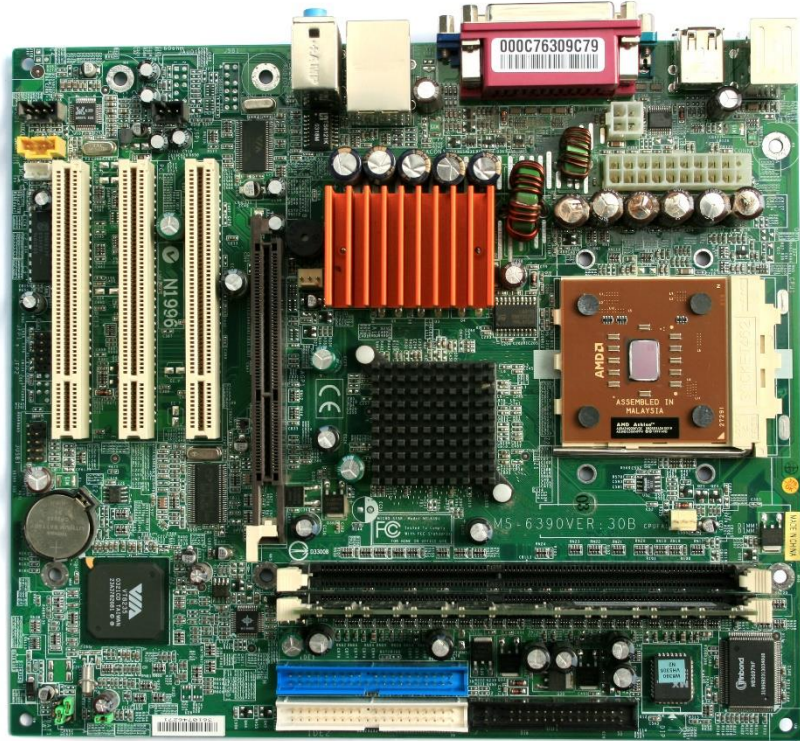
# PC “Destruction Derby” Teardown

Some components to look for...

Scavenger Hunt?

# Motherboard

- Probably the first thing you'll see, it's large...



- Role: interconnect for all the other pieces.

# Heat Sinks

- Often spiky and weird looking. Will probably be a few of these.

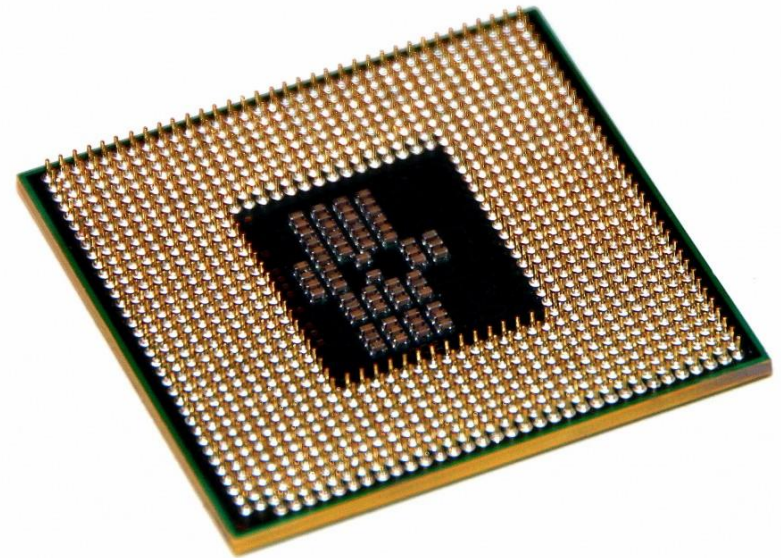


- Role: use large surface area to pull heat off components.



# Central Processing Unit (CPU)

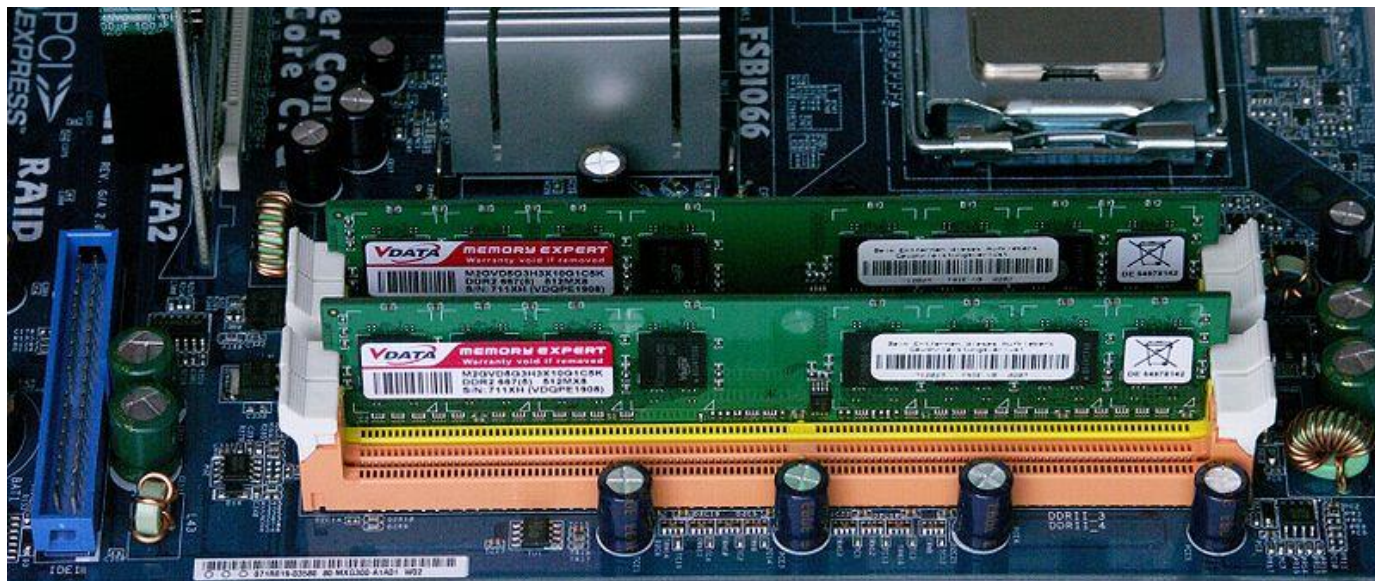
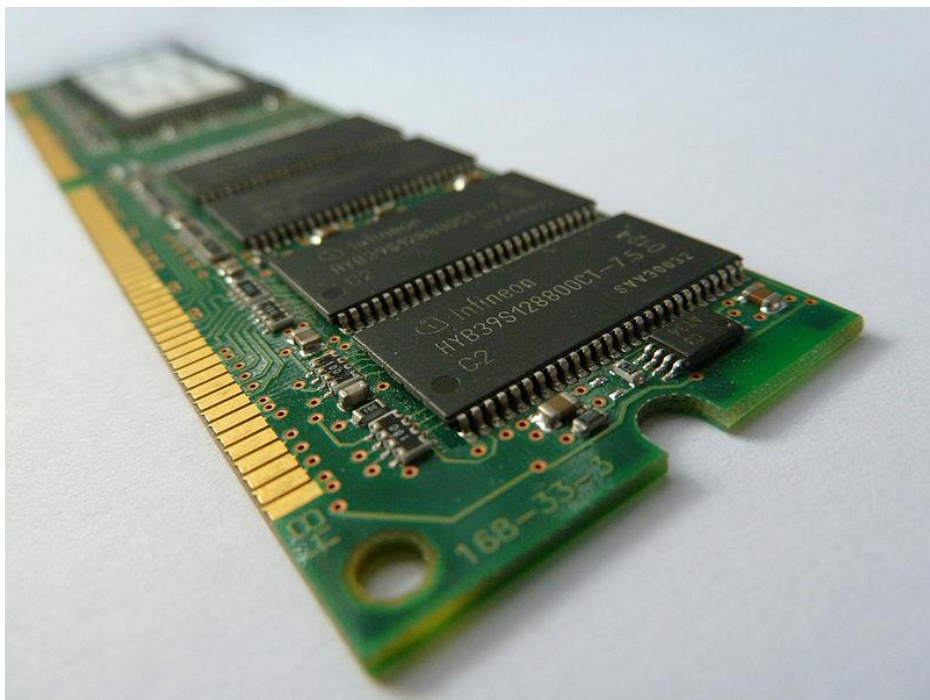
- Small square with lots of tiny pins. Found under a large heat sink.



- Role: execute program instructions, drive the machine.

# Memory / Random Access Memory (RAM)

- Small rectangular board found in motherboard sockets.



- Role: short term memory / scratch space for current execution.



# Disk (Traditional Spinning)

- Chunky metal box with spindles inside.



- Role: long term file data storage.

# Disk (Solid State)

- Small metal/plastic box with circuit boards inside.

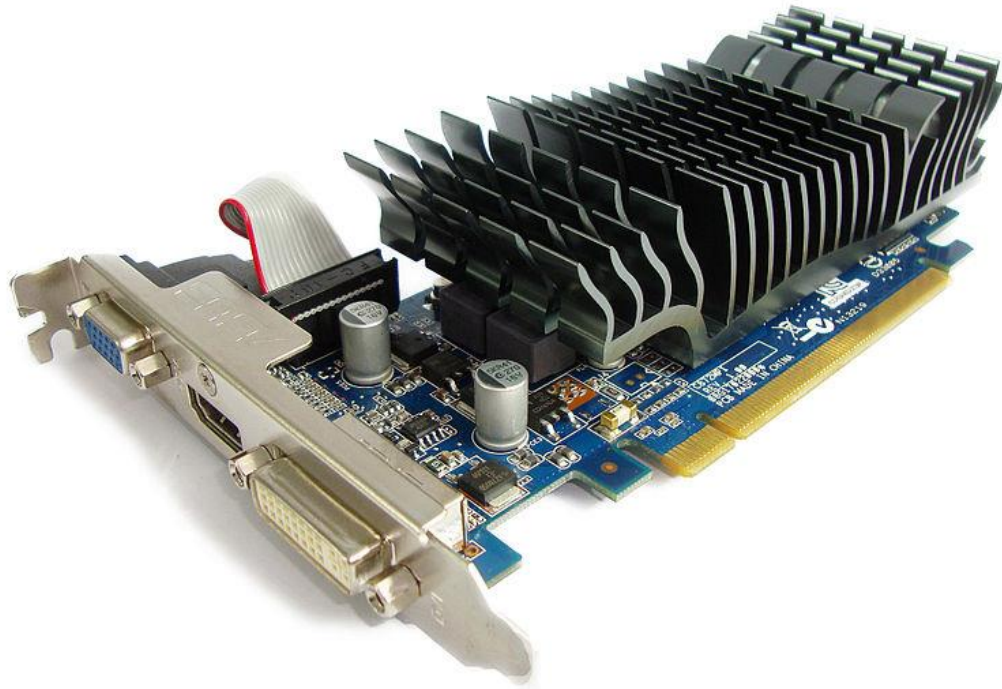


- Role: long term file data storage.



# Graphics Card

- Large board, plugged into motherboard socket, with heat sink.



- Role: send images to monitor.





# Be Safe, Have Fun!

- We don't need these machines, will recycle left over parts.
- Watch for sharp metal!
- Wash your hands afterwards.
- Don't eat thermal paste (duh?)